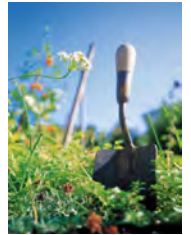




# DIRTY DIGS



Autauga County Master Gardeners Association

July 2015

*ENTERTAIN, EDUCATE, ELEVATE*

## Next Meeting

**August 13,  
2015**

Meeting Location:

First Baptist  
Church

@9:00AM

## Guest Article: Submitted, by Donald Armstrong



**Hydrangea Propagation**  
**Hydrangea macrophylla – Mop Head**  
**Hydrangea quercifolia – Oak Leaf**  
**Hydrangea macrophylla normalis – Lacecap**

### By Don Armstrong –

Now that the cool Spring weather is gone, and we are in the heat of the summer, it is time to prune the Hydrangea plants in our gardens and propagate them for the Autauga County Master Gardener 2016 Plant Sale. We must plan ahead to be ready for next year's Plant Sale.

I know all of you have been propagating your spring blooming shrubs so they will be ready for the 2016 Plant Sale. Now is the time to propagate Hydrangeas so we have lots of different shrubs for the 2016 Plant Sale.

Hydrangeas are fairly easy to propagate. There are three ways to do this: Stand in Water, Cuttings, and/or Layering. While it might be fun to put a cutting in a glass of water and watch it root, the reality is this is not the best way to propagate Hydrangeas as the success rate is quite low. We need lots of plants for the 2016 Plant Sale.

### **CUTTINGS:**

Propagation by cuttings is not that hard, and it does not take a lot of time. Hydrangea cuttings should be taken the end of July and the first couple of weeks in August. Blooms should have peaked at this point. Be sure your pruning tools are clean. You do not want to transmit diseases from one plant to another. Hey, you are going to prune the Hydrangea anyway, so you have used no extra time in this step, just prune correctly to be ready to propagate. Of course, not all things cut off the plant will be suitable to make cuttings for propagation.



Before pruning of Mop Head Hydrangea



After Pruning

Take your cuttings from a branch that did not bloom this year. The cutting should be 6 inches long or longer. The cutting needs to have a minimum of two bud nodes that will be covered by the rooting medium. Depending upon how far apart the buds are on your plant will guide the actual length of the cuttings you take. I like to have one bud node above the planting medium and then the tip leaf node above this. Hence, the cutting will have four nodes – two above the rooting medium and two in the rooting medium.

Remember to cut the stem off just below the bottom bud node. When you clip the cutting from the Hydrangea plant you should cut just above the leaf/bud node left on the plant. This leaves a section of stem that needs to be cut off before propagation.

I remove all leaves from the stem of the cutting except the leaves at the tip leaf node. Reduce the number of leaves at the tip node to two leaves. Then cut these two leaves in half or even to one third their size on the larger leaves. The goal is to reduce the demand the leaves are putting on the nonexistent root system, but still having some leaf surface to make a request to the roots for nutrients to help remind the roots to grow.

I prefer to use the black plastic one gallon pots for Hydrangea propagation. The depth of the one gallon pot is needed as the bud nodes are not that close together on Hydrangeas, so a lot of rooting medium is needed to cover the bottom two nodes. And, the bottom node should not be touching the bottom of the pot.



Use your favorite rooting medium. Some people use sand, and others use a commercially prepared medium. I think the sand is too heavy, and I don't have any to use. I can't afford the commercially prepared mediums; so, I use the same potting soil that I use to grow all my plants. I use a mix of about one fourth commercial peat moss planting mix (no real chemicals in it) and three fourths wood chips from the Paper Mill. Sometimes I add some Black Kow to the mix, and sometimes I add recycled soil from a plant that died. OK, so I don't have the preferred rooting medium, but it seems to work. It is, for sure, not sterile like it should be for best results. But, it meets my price range!

Fill the one gallon pot to within an inch or two of the top with moist rooting medium. The rooting medium should be moist when you place it into the pot. Then, use a small stick or pencil to poke a hole in the rooting medium. Dip the prepared cutting in a rooting hormone and place it into the hole you made with the stick/pencil. Gently press the soil around the cutting. Repeat this process with each new cutting.

I like to put one cutting in the middle of the pot and then four to six in a circle around this center cutting. Add water as needed so the rooting medium is nice and wet, but not soaked. Don't wash out the root hormone you put on the tip of the cuttings!

Now it is time to get these cuttings to root. Take your pots and put them in the greenhouse. Oh, you don't have a greenhouse? Then create one! Put stakes in your pot that are taller than the cuttings and put a clear plastic bag around the plant and put a twist tie above the stakes. Poke some holes in the plastic. You will need to open the plastic daily to let the cutting breathe. The plastic bag trick keeps moisture on the leaves and this is important.

If you are doing just one or two pots this plastic idea is great. But, I don't have the time to open and then close these bags every day when I am going to do a dozen or more pots. So, I set my pots in a fully shaded area, absolutely no sun, and water them daily. I do my best to keep the leaves moist by daily watering and in full shade. My success rate is reduced a little because I don't keep the leaves moist enough, but I get a lot of plants this way.

Roots start to form in two to three weeks. But, it will take four weeks or more to have the cuttings ready to upgrade to individual pots. I usually wait eight weeks to be sure I have a good root system as I do tear the root system up a bit when I separate the cuttings to upgrade the cuttings to individual pots. Once the cuttings root, the pot full of cuttings can be broken apart and the cuttings moved to new one gallon pots to grow into saleable Hydrangeas (or to add to your garden). I keep these newly potted cuttings in the shade under my woodland trees. This shade is dappled shade, so these plants do get a little bit of sun.

This time line to go from cutting to a cutting ready for a gallon pot puts your new Hydrangea plants trying to grow in the very late fall and early winter. Young Hydrangea plants do not over winter very well outdoors. Here are two ideas to help the Hydrangea plants survive the winter, if you don't have a greenhouse. Sink the pots into the ground and cover well with a lightweight mulch. Or for smaller pots, place them next to a foundation and cover them with large clay pots for the winter. A pile of recently raked leaves should provide the lightweight mulch to cover your pots.

Remember, we are doing this to have plants for the 2016 Plant Sale, so do as many cuttings as you can. And, it is fun to get new things to grow.

## **LAYERING:**

Layering is a bit more work than doing cuttings. And, to get more than one plant, you will be digging a lot of trenches! Make sure you have plenty of room around your Hydrangea for all the trenches you plan to make. The 2016 Plant Sale needs lots of plants!

Start by digging a trench next to a Hydrangea plant at a location where a branch will easily pull down to the trench. The trench needs to be about three inches deep and at least six inches long. The branch needs to easily lie in the trench without breaking, so the length of the trench can vary.

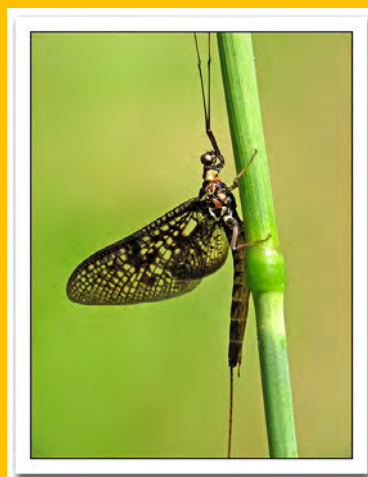
Bend the middle of a healthy branch down to the trench and mark the spot where the branch touches the middle of the trench. Remove the leaves along the section of the branch that will be in the trench. Then score the branch with a sharp knife so the dermis, the white layer under the bark, is exposed.

Lay the branch in the trench with the scored side down at the bottom of the trench. Cover the trench with the soil you removed. Place a heavy weight, such as a brick, over the trench to keep the branch in place.

This layering process will take four to six weeks. At the end of the six weeks, sever the new plant from the mother plant, but do not try to remove the plant. The new plant needs to grow undisturbed for about two more weeks. Once this time has passed, then you can dig up the new plant and pot it up for the plant sale or for use in your garden.



## What's Bugging You





Can You Identify the above insect?

Beneficial or Destructive

(Answer is on the Last Page)

# July 2015

Sun      Mon      Tue      Wed      Thu      Fri      Sat

			1	2 <i>Prattville 9:00 AM</i> <i>Lunch and Learn-Yr Round Color</i> <i>Jason Powel</i>	3	4 <i>Happy 4th</i> 
5	6 <i>Governors Mansion workday</i>	7 <i>Demo Garden 8:00 AM</i>	8	9 <i>Prattville 9:00 AM</i>  <i>ACMGA Meeting 6PM</i>	10	11
12 	13 <i>Governors Mansion workday</i>	14 <i>Demo Garden 8:00 AM</i>	15	16 <i>Prattville 9:00 AM</i> <i>Lunch at Las Casitos</i>	17	18
19	20 <i>Governors Mansion workday</i>	21 <i>Demo Garden 8:00 AM</i>	22	23 <i>Prattville 9:00 AM</i>	24	25
26	27 <i>Governors Mansion workday</i>	28 <i>Demo Garden 8:00 AM</i>	29	30 <i>Prattville 9:00 AM</i> <i>Father-in-Law Day</i>	31	

# August 2015

Sun      Mon      Tue      Wed      Thu      Fri      Sat

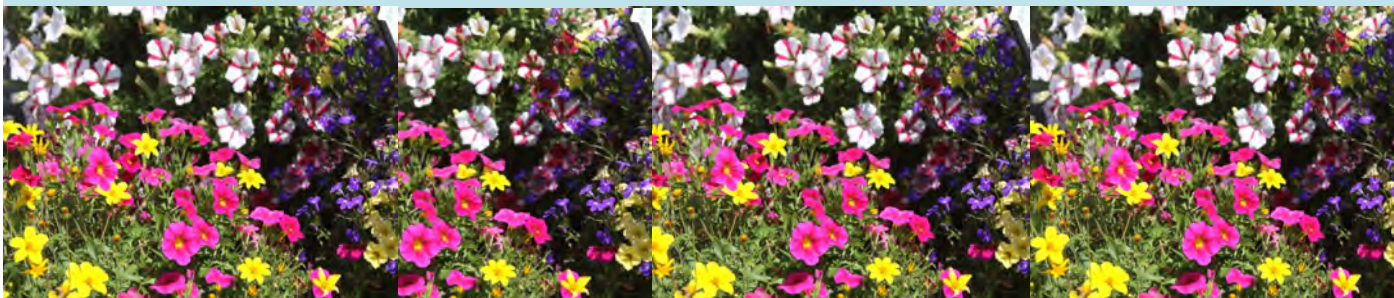
						1
2	3 <i>Governors Mansion workday</i>	4 <i>Demo Garden 8:00 AM</i>	5	6 <i>Prattville 8:00 AM</i>	7	8 <i>Sneak some zucchini on your neighbor's porch day</i>  <i>Chilton Co EXPO</i>
9	10 <i>Governors Mansion workday</i>	11 <i>Demo Garden 8:00 AM</i>	12	13 <i>ACMGA Meeting 9AM Intern Graduation</i>	14	15
16	17 <i>Governors Mansion workday</i>	18 <i>Demo Garden 8:00 AM</i>	19	20 <i>Prattville 8:00 AM</i>	21	22
23	24 <i>Governors Mansion workday</i>	25 <i>Demo Garden 8:00 AM</i>	26	27 <i>Prattville 8:00 AM</i>	28	29
30	31 <i>Governors Mansion workday</i>					

## Governor's Mansion Report by Amanda Borden

In June, volunteers at the Governor's Mansion weeded beds in the portico area, the front yard, the herb garden, and the Serenity Garden. They limbed up holly trees and did some trimming of azaleas. Jane McCarthy chose shady areas for as much of the work as possible due to the extreme heat we have experienced. Mark your calendars for



. Tour of Maxwell AFB greenhouse set up for Nov 12 at 10 am. We will need names of those attending tour to give to Jane McCarthy so that they will be able to enter base.



# Youngs Plant Farm Tour

On June 17 ten Autauga County Master Gardeners and one future Master Gardener took a tour of Young's Plant Farm Trial Gardens in Auburn. Young's provides annuals to most of the 'box stores' in Alabama. If you missed this tour, shame on you. This has to be the top tour for me since I became a Master Gardener. There was such an explosion of flowers that kept us in awe. The trial gardens are only open to the public one week out of the year and must be scheduled through a group. I will let the pictures judge for themselves. Prior to touring the gardens we had lunch at a wonderful restaurant, Amsterdam's. The wine cellar gave a perfect ambiance to some delicious food.





# More Young's Plant Farm Pictures



# Hummingbird Award for June



The Hummingbird Award for the month of June went to Millie Ledford

Millie has done an outstanding job in propagating, raising and selling the most expensive plants for the Plant Sale. Hats off for a job well done.



# Alabama Gardener's Calendar

## July

### Fruits and Nuts

- Protect figs and other ripening fruit from birds.

### Shrubs

- Continue to root shrub cuttings until late in the month and mulch to keep soil moist.
- Remove faded blooms promptly from crape myrtle and other summer-blooming plants.

### Lawns

- Watch for diseases.
- Mow regularly.
- Water as needed.

### Roses

- Keep roses healthy and actively growing.
- Apply fertilizer.
- Wash off foliage to prevent burning if any fertilizer falls on plants.

### *Alabama Gardener's Calendar 5*

### Annuals and Perennials

- Water as needed to keep plants active.

### Bulbs

- Iris and spider lilies may be planted late this month.

### Miscellaneous

- Keeping flowers, shrubs, trees, and lawns healthy is the major task this month.
- This demands close observation for insects and diseases.
- Water.

### Vegetable Seed

- Plant beans, field peas, rutabagas, squash, New Zealand spinach, and Irish potatoes.
- Plant cabbage, collards, broccoli, cauliflower, Brussels sprouts, and celery for the fall crop.

### Vegetable Plants

- Plant tomatoes in central and north Alabama

# June Meeting



# Leanne Wadsworth's

## Important Announcements

**From Pam Olson:** Here's your monthly reminder to bring items for the "Cultivating Our Community" project with you to the next meeting. Pam Olson usually collects them. If she's not at the meeting, Nancy Waggoner steps in. This is our sister project to the Prattville-Autauga Demonstration Garden. Produce from the garden supplies fresh vegetables to AICC, Autauga Interfaith Care Center – our county's food bank. But people who need a temporary helping hand have many needs in addition to food. Cleaning products, both personal and for the home, can take a big bite out of one's wallet yet are essential for one's dignity. We, as individual members, help supply the non-food items. AICC is in constant need of: **adult toothbrushes, toothpaste, shampoo, deodorant, dish detergent, laundry detergent, and household cleaners.** Smaller-sized store brand cleaning products are better because your dollars put products into more bags at the center. Sample sizes of any of the items are okay, too. Anything is appreciated! As with all our MG projects, participation is optional.

Pam Olson reported that last year we donated 145 pounds of personal care and cleaning products (and most of the personal care items don't weigh very much) in addition to almost 20 cosmetic bags to be used in gift baskets for ladies, a school backpack, and a set of sheets,

### **PALS Beautification Award**

Anytime you see a yard that you would like to nominate for this award and do not have a nomination form, please get the information to me, Rose McCauley, by regular mail, email or drop it by my home. Include the following:

Your name and contact information

Category - Private House, Business, School, Government

Nominee's Name (if you have it)

Nominee's Address

Nominee's Phone Number (if you have it)

Directions

Reasons for Nomination

If you have any questions, please let me know.

Rose McCauley

# **Autauga County Master Gardeners Association**

## **JOIN US FOR LUNCH & LEARN 2015**



**THE 1<sup>ST</sup> THURSDAY OF EVERY MONTH**

**12:00-1:00 P.M.**

**FREE PROGRAMS**

**Christ Lutheran Church, 2175 Cobbs Ford Road, Prattville 36066**

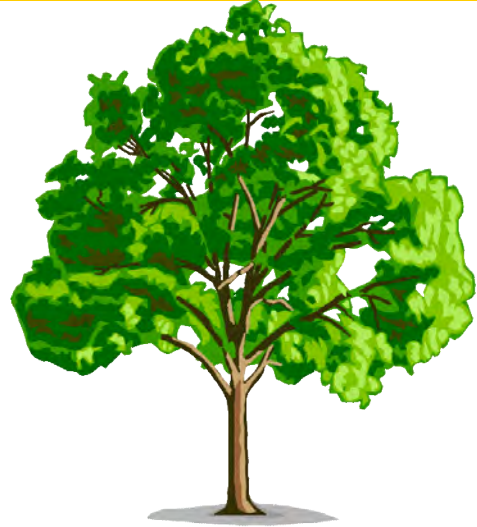
- |                    |   |
|--------------------|---|
| <b>FEBRUARY 5</b>  | <b>MONTHLY GARDEN TASKS AT A GLANCE</b> |
| <b>MARCH 5</b>     | <b>MULTIPLYING YOUR PLANTS</b>          |
| <b>APRIL 2</b>     | <b>BACKYARD TOMATOES</b>                |
| <b>MAY 7</b>       | <b>HYDRANGEAS</b>                       |
| <b>JUNE 4</b>      | <b>TREE ID</b>                          |
| <b>JULY 2</b>      | <b>YEAR ROUND COLOR</b>                 |
| <b>AUGUST 6</b>    | <b>BULBS</b>                            |
| <b>SEPTEMBER 3</b> | <b>GARDEN DESIGN</b>                    |
| <b>OCTOBER 1</b>   | <b>CACTI AND OTHER SUCCULENTS</b>       |
| <b>NOVEMBER 5</b>  | <b>HOLIDAY DECORATING</b>               |



**For more information contact the Autauga County Extension Office. (334) 361-7273**

**BRING A SACK LUNCH. DRINKS PROVIDED.**

# June Lunch and Learn



Brigita Giles teaching public how to identify trees grown in Alabama





# All Bugs Good and Bad

## 2015 Webinar Series

Please join us for this webinar series for information you can use about good and bad insects. Webinars will be on the first Friday of each month at 2 p.m. Eastern.

- February 6**    **Pesticide Strategy: the Good, the Bad, and the Ugly**  
*Kaci Buhl*
- March 6**        **Fire Ant Management Using Baits**  
*Dr. Lawrence "Fudd" Graham*
- April 3**         **Common Termites of the United States: Biology, Behavior, and Management**  
*Dr. Robert Puckett*
- May 1**            **Beneficial Garden Helpers**  
*Dr. Kris Braman*
- June 5**          **Insect-borne Diseases Affecting People**  
*Dr. Nathan Burkett-Cadena*
- August 7**        **Management of Japanese Beetles and Other White Grubs**  
*Dr. Juang-Horng "J.C." Chong*
- September 4**   **Bees, Wasps and Hornets - They're All Different**  
*Dr. Charles Ray*
- October 2**       **Keep Ants and Cockroaches from Ruining Your Holidays**  
*Elizabeth "Wizzie" Brown*
- November 6**    **Let's Beat the Bug! New Things to Know about Bed Bugs**  
*Dr. Stephen Kells*
- December 4**    **Wildlife in the Backyard - a Double-edged Sword**  
*Dr. Scott Hygnstrom*



For more information on the series and how to connect to the webinars, visit: [extension.org/pages/72197](http://extension.org/pages/72197).



Citations for pictures: top banner: Jim Occi, BugPics, bugwood.org; Jerry A. Payne, USDA-ARS, bugwood.org; Nadeer Youssef, TN State Univ.; USDA ARS Photo Unit, USDA-ARS, bugwood.org; David Cappaert, Michigan State University, bugwood.org; Sturgis McKeever, Georgia Southern University, bugwood.org.



# AMGA FALL SEMINAR



2015



***“SEASON’S  
ENDING OR  
JUST  
BEGINNING”***



## **ALABAMA MASTER GARDENER ASSOCIATION 2015 FALL SEMINAR**

**September 9, 2015  
8:30a.m.-3:00p.m.**

**Clanton Conference  
& Performing Arts  
Center  
Jefferson State  
University Campus  
1850 Lay Dam Road**

**Registration: \$25  
Payable to  
Chilton County Master  
Gardener Association  
(CCMGA)**

**Send Registration and  
Check to:  
CCMGA  
P.O. Box 30  
Clanton, AL 35046  
Registration end date  
August 24, 2015**

**Partner hotels:**

**Holiday Inn Express  
815 Bradberry Lane,  
Clanton, AL [\(205\)-280-1880](tel:205-280-1880)  
Discounted rate \$105**

**Best Western  
801 Bradberry Lane,  
Clanton, AL  
[\(205\)280-1006](tel:205-280-1006)  
Regular rate \$85.00**

**For more information call:  
Pat Farmer--205-755-2879  
or Sondra Henley-  
205-567-3333**

### **EVENT DETAILS**

- 8:30 - 9:15 Registration**
- 9:15 - 9:30 Welcome**
- 9:30 -10:30 Bulbs, Tubers, & Corms,  
Oh My! (Jason Powell)**
- 10:30-10:45 Break**
- 10:45-11:45 Gardening Insights From  
Permaculture (Will Sheftall)**
- 11:45-12:45 Lunch (Provided)**
- 12:45- 1:45 Seed Saving & Propagation  
(Dani Carroll)**
- 1:45 - 2:00 Break**
- 2:00 - 3:00 Sex in the Garden-  
Pollination (Sallie Lee)**



# AMGA FALL SEMINAR



## 2015



### "SEASON'S ENDING OR JUST BEGINNING"

Name: \_\_\_\_\_

MGA Affiliation: \_\_\_\_\_

Address: \_\_\_\_\_  
\_\_\_\_\_

Email: \_\_\_\_\_

Phone: \_\_\_\_\_

**Registration forms must be received by August 24, 2015**

**The \$25 fee will include morning snack, lunch and drink.**

**Lunch Selection:      Meat (1-4 choices)**

**Includes condiments, salad, fruit, & dessert**

- Ham
- Turkey
- Roast Beef
- Cheese
- Sub bun
- White bread
- Wheat bread

**Bread selection (Choose 1)**



\*\*\*\*\* **AMGA FALL SEMINAR** \*\*\*\*\*

**8:30-9:15 REGISTRATION**

**9:15—Welcome**

**9:30-10:30—Jason Powell**



B.S. Auburn University, Landscape Design Horticulture; M.S. Texas A&M University, Horticulture

**BULBS, TUBERS, & CORMS—OH MY!**

**10:45-11:45—William Sheftall**



Natural Resources Extension Agent IV, Leon County, FL Cooperative Extension Service

**GARDENING INSIGHTS FROM PERMACULTURE**

**Box Lunch 11:45-12:45 (Provided)**

**12:45-1:45 Dani Carroll**



Regional Extension Agent II, Home Grounds, Gardens and Home Pests, Gadsden, AL

**SEED SAVING & PROPOGATION**

**2:00-3:00 Sallie Lee**



Regional Extension Agent II, Home Grounds, Gardens and Home Pests, Gadsden, AL

**SEX IN THE GARDEN-POLLINATION**

**ALABAMA MASTER GARDENER ASSOCIATION 2015 FALL SEMINAR**

**September 9, 2015  
8:30a.m.-3:00p.m.**

**Clanton Conference & Performing Arts Center  
Jefferson State University Campus  
1850 Lay Dam Road**

**Registration: \$25  
Payable to  
Chilton County Master Gardener Association (CCMGA)**

**Send Registration and Check to:  
CCMGA  
P.O. Box 30  
Clanton, AL 35046  
Registration end date  
August 24, 2015**

**Partner hotels:**

**Holiday Inn Express  
815 Bradberry Lane,  
Clanton, AL [\(205\)-280-1880](tel:205-280-1880)  
Discounted rate \$105**

**Best Western  
801 Bradberry Lane,  
Clanton, AL  
[\(205\)280-1006](tel:205-280-1006)  
Regular rate \$85.00**

**For more information call:  
Pat Farmer--205-755-2879  
or Sondra Henley-  
205-567-3333**



# AMGA FALL SEMINAR



## 2015



### Directions from within Alabama:

**From Birmingham and areas north: Travel I-65 South to Clanton 212 exit (PEACH TOWER EXIT), turn right towards Clanton, go approximately 1 mile, Jefferson State College is on left, parking and entrance in back.**

**From Montgomery and areas south: Travel I-65 North to Clanton 212 exit (PEACH TOWER EXIT), turn left towards Clanton, go approx.. 1 mile, Jefferson State College is on the left, parking and entrance in back.**

**From areas west or east of Clanton, follow signs to 145 north. Turn left at light to go out 145 (Lay Dam Road). Jefferson State College is approximately 2 miles from corner of Lay Dam Road (also 145 and 1<sup>st</sup> St.) and 3<sup>rd</sup> Ave. The Alfa Building is also at that corner. If detour is still in effect, you will go 31 N. to Ollie Avenue, turn right, at end turn left on Lay Dam Road. Jeff State approx. 1.5 miles on right.**



Jefferson State Community College  
Jefferson State Community College, 1100 Lay Dam Rd, Clanton, AL 35045



Other Tidbits: We really need more volunteers for our gardens. Please consider giving an extra hour here and there.

Interns: check your hours!!!!!! Graduation is around the corner.

We are planning on having a class starting September 9th. Please get the word out.

## See message below from Pat Farmer, Chilton County Master Gardener President.

I wanted to pass along a message to your members about the Chilton Research and Extension Center's EXPO on August 8th. We always pass along this news to surrounding associations looking for volunteers. If any of your members would like to help this year (registration, ice cream house, fruit tent, etc), have them contact Lee or Wally Walters at [leeewalters@gmail.com](mailto:leeewalters@gmail.com). They can email them and let them know if they want to volunteer. I will also add this to the July AMGA Volunteer Ops bulletin; however, Lee and Wally like to have their volunteers lined up in advance since it is such a big project

## Announcing!

# 2015 Autauga County Master Gardeners Class *Transforming Lives...One Person at a Time*

Classes will be held on Wednesdays  
Sept. 9 - Nov. 18, 2015 (Subject to Change)  
9 AM - 2 PM , William Howard Smith Agricultural Center, Autaugaville, Alabama

**Cost: \$150 (non-refundable)    Application deadline: 8/20/2015**



Download your application at  
[www.aces.edu/counties/Autauga](http://www.aces.edu/counties/Autauga)  
Click on Autauga Master Gardeners Association  
Or call the Autauga County Extension Office at  
(334) 361-7273



Alabama Cooperative Extension System (Alabama A&M University and Auburn University) is committed to affirmative action, equal opportunity, and the diversity of its workforce. Educational programs of the Alabama Cooperative Extension System serve all people regardless of race, color, age, sex, religion, disability, sexual orientation, or national origin.

[www.aces.edu](http://www.aces.edu)

# Future Events Schedule

Chilton County food Expose on August 8.

Master Gardener Graduation at August 13 Meeting

Fall AMGA meeting in Chilton County on September 9th

Intern class begins September 9th TBD.

Tour of Maxwell AFB greenhouse—November 12

## What's Bugging You Answer:

### The Mayfly

Beneficial as an important food source for fish. Only lives as an adult for up to three days. It has no mouth parts for feeding. The only purpose for adults is to mate and lay fertilized eggs. About 99% of its life is spent on the bottoms of lakes, ponds, streams



Anthony Yarbrough, Editor  
Email: [ayarb@knology.net](mailto:ayarb@knology.net)  
May God Bless